

Community Gardening Volunteer

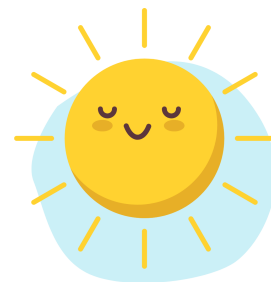
Role Description

Join our friendly volunteer team at Mitcham Community Orchard & Gardens and Phipps Bridge Community Garden to help with food growing, gardening and a variety of hands-on outdoor activities. Our growing spaces are peaceful havens in a busy urban environment and aim to nurture people, nature and the planet, so why not come along and get involved!



What is involved?

- ❖ Help with seed sowing, transplanting seedlings, weeding, mulching and watering
- ❖ Help to maintain our compost bins
- ❖ Harvest fruit and veg (and weigh produce for our community fridge as needed)
- ❖ Assist with maintenance and DIY tasks, such as mending fencing and building/repairing raised beds (if you wish to)
- ❖ Help maintain our fruit trees and bushes, rose bed, pond, hedge and wildflower meadow (Mitcham Community Orchard & Gardens only)



This role will suit people who...

- ❖ Enjoy being outdoors and close to nature
- ❖ Want to do their bit to improve their local communities and support climate action
- ❖ Are looking to develop and improve their gardening and food growing knowledge

Whether you are a beginner or more experienced, our community greenspaces are open to everyone; we welcome people of all ages and backgrounds. *Children under 16 must be accompanied by a responsible adult.*

What's in it for you?

- ❖ Enjoy the many health and well-being benefits of gardening
- ❖ Develop your knowledge of sustainable and organic food growing
- ❖ Spend quality time with family and friends and meet other like-minded people

Time commitment: Join our regular weekly volunteer sessions or come to one of our monthly action days. Currently, sessions take place on:

Wednesdays and Sundays (both weekly) - Phipps Bridge Community Garden

Fridays (weekly) and Saturdays/Sundays (once a month) - Mitcham Community Orchard

Training: Warm welcome, induction and guidance provided if needed

Resources: Tools, gloves and refreshments supplied

Getting there:

Phipps Bridge Community Garden - access via the alleyway beside 58 New Close SW19 2SY
Mitcham Community Orchard & Gardens, Fieldgate Lane, Mitcham CR4 3AL

How to apply:



To become a Community Gardening Volunteer, *please complete our [registration form](#) and select which garden you would like to volunteer at.* You will then be invited to a welcome session at your local community garden.

Please contact katie@sustainablemerton.org if you have any questions or would like to visit our growing spaces before signing up.

Find out more about us at sustainablemerton.org.